



Shown with two cool white, and red emergency back up light.

FIXTURE FEATURES

- Housing and diffuser are made of self-extinguishing polycarbonate
- Enclosure impact proof
- Fire proof
- High temperature proof
- IP65 rating
- Holds three T8/T10 lamps
- Standard lens clips are polycarbonate, or optional metal

DESCRIPTION

A solid PVC fixture using metal lens clips for durability. The system uses two cool white lamps and one red lamp for a back up or emergency lighting system.

LED LAMP FEATURES

The special features of the LED Light Tube are:

- Solid state lighting device, works well in harsh environments of hot or cold temperatures
- Instant on, no warm up time required
- Lasts 10 times longer than fluorescent
- Low EMI emissions, to eliminate radio interference
- Designed to replace conventional fluorescent lamps
- Vibration proof features
- Lead Free Compliant, Mercury Free

NOTES & PATENT INFORMATION

US 7,307,391

Canadian and International Patents Pending

DIMENSIONS

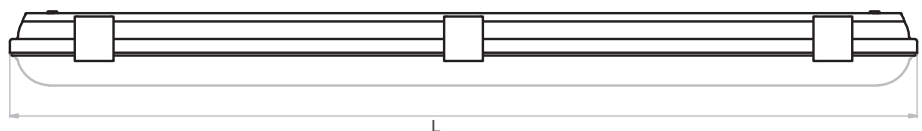
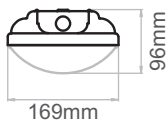
Assembly No.	MSL-48x3
Model No.	MX436-Y32x3
Gasket Type	Silicon
Lamp Type	T8/T10 Fluorescent
Mount Bracket	Stainless steel
Lens Clip	PVC
Dimension	1290 x 169 x 96mm 50.8" x 6.7" x 3.8"

Assembly No.	MSL-24x3
Model No.	MX236-Y17x3
Gasket Type	Silicon
Lamp Type	T8/T10 Fluorescent
Mount Bracket	Stainless steel
Lens Clip	PVC
Dimension	675 x 169 x 96mm 26.6" x 6.7" x 3.8"



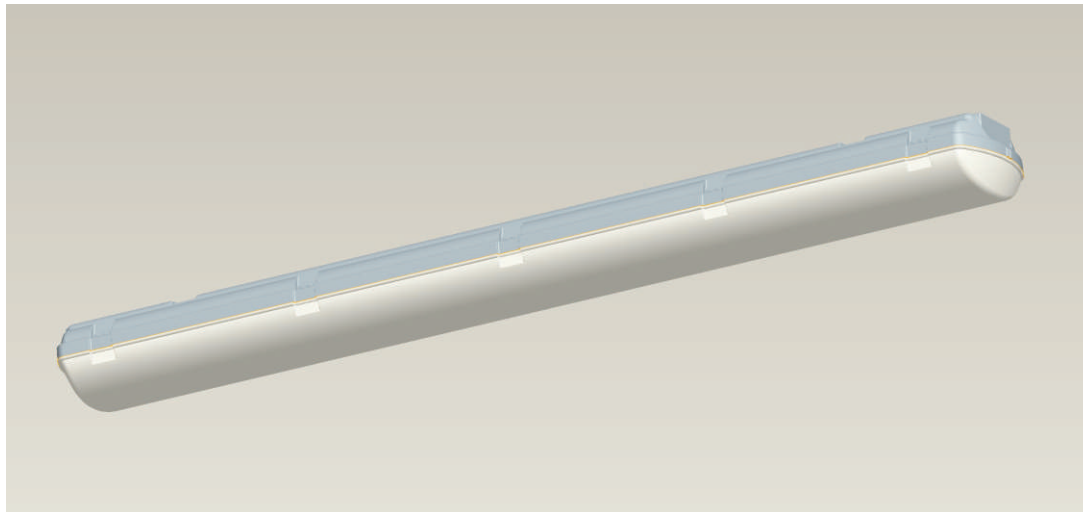
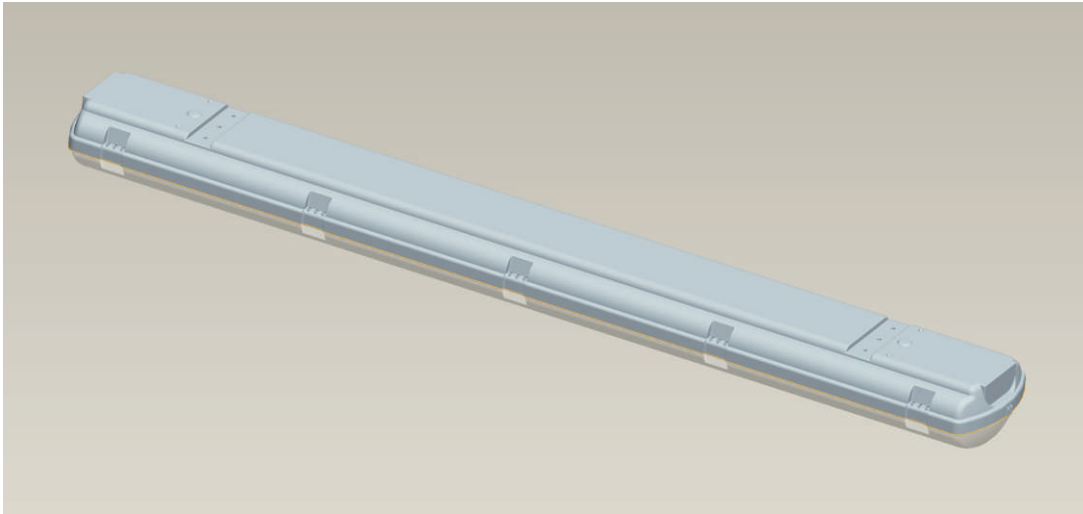
E301466

IP65



MIL STD461

3-D Views of 48" Fixture



DIMENSIONS

T10 DIAMETER



Standard Length	A				B				C			
	Inch		mm		Inch		mm		Inch		mm	
	MIN	MAX	MIN	MAX	MIN	MAX	MIN	MAX	MIN	MAX	MIN	MAX
24	-	23.22	-	589.8	23.67	23.78	601.2	604.00	23.40	23.50	594.4	596.9
48	-	47.22	-	1199.4	47.67	47.78	1210.8	1213.60	47.40	47.50	1204.0	1206.5

Follows: ANSI C78.1d-1986 & 1988

LIGHT TUBE SPECIFICATIONS

Type	Nominal Length (inch)	Input Voltage (DC Volts)		Lens Type	Input Current (DC Amps)	Intensity (Estimated Lumens)	Power Consumption (Watts)	Color Temperature
		MIN	MAX		TYP @ 28V	TYP @ 28V	TYP @ 28V	TYP
COOL WHITE								
FLR	24	24	28	Clear	0.56	1260	15.0	5000K
	48				0.86	1974	24.1	
RED								
FLS	24	24	28	Single Frosted	0.33	590	10.0	RED (635nm)
	48				0.33	590	10.0	

Cool White Color Temperature: Typ: 5000K, Range 4745K-5310K

CRI = 80

Operating Temperature: Typ: 25°C (77°F), Range -40°C (-40°F) to 60°C (140°F)

WARNINGS & SAFETY

High power LEDs have a high intensity of light in a single point. Avoid looking directly at the source of light for any prolonged time as it could cause retinal damage. This light source should be shielded with the lens as provided by LED Smart Inc. The removal of the lens would void all warranties and liability from the manufacturer and distributor of this product.

LED Smart Inc. works continually to improve our products, we reserve the right to change or modify the designs or specifications of this product at any time without prior notice. All rights reserved. This product is under a patent and patent pending protection.