

for use in bi-pin fluorescent lamps retrofit or new installations

Patented



DESCRIPTION

The solution is designed for energy saving projects with large amounts of existing or new fluorescent lamps to be converted or installed with LED lamps.

A feasible solution consisting of a set of 1 to 4 24V LED tube(s) and a commercial grade power supply for either 277VAC, 240VAC* or 120VAC#.

* 220VAC~240VAC
110VAC~120VAC

STANDARD FEATURES

- 48" length
- Cool White LEDs
- 24V Operating Voltage
- Double Frosted Lens
- Bi-Pin, Instant start connection type
- T8, T10 Size (limited lengths)



BENEFITS OF LEDs

The special features of the LED Light Tube are:

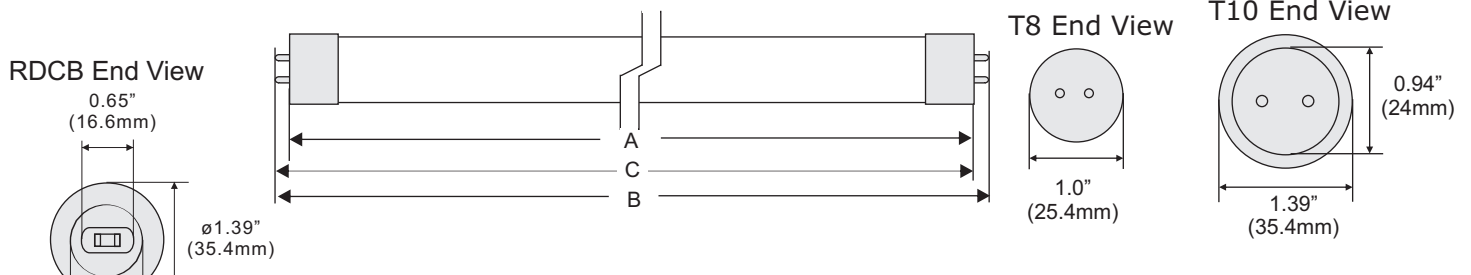
- Solid state lighting device, works well in harsh environments of hot or cold temperatures
- Instant on, no warm up time required
- Lasts 10 times longer than fluorescent
- The extrusion acts as a heat sink to extend life of LEDs
- Low EMI emissions, to reduce radio interference
- Designed to replace conventional fluorescent lamps
- Lead and mercury free



OPTIONAL FEATURES

- Lengths of 18", 24", 36", 60", 72", up to 96"
- Colors: Warm White Neutral White, Amber*, Red*, Green* and Blue*
- Clear or single frosted lenses*
- Fa8, RDCB style end caps*

DIMENSIONS



Standard Length	A				B				C			
	Inch		mm		Inch		mm		Inch		mm	
	MIN	MAX	MIN	MAX	MIN	MAX	MIN	MAX	MIN	MAX	MIN	MAX
24	-	23.22	-	589.8	23.67	23.78	601.2	604.00	23.40	23.50	594.4	596.9
36	-	35.22	-	894.6	35.67	35.78	906.0	908.80	35.40	35.50	899.2	901.7
48	-	47.22	-	1199.4	47.67	47.78	1210.8	1213.60	47.40	47.50	1204.0	1206.5
60	-	59.05	-	1499.9	59.50	59.61	1511.3	1514.10	59.24	59.33	1504.7	1507.0
72	-	71.22	-	1809.0	71.67	71.78	1820.4	1823.21	71.40	71.50	1813.6	1816.1

US Patent # 7,307,391
International Patent Pending

Follows: ANSI C78.1d-1986 & 1988

* Special Order, please contact manufacturer for details

ELECTRICAL AND LUMEN SPECIFICATIONS

COOL WHITE											
Size	Nominal Length (inch)	Lens Types	Input Voltage (AC/DC Volts)	Energy-Saving Economy		Energy-Saving Premium		High Brightness Premium		High-Power	
				ALA Series		ALB Series		ALC Series		ALD Series	
				Luminous Intensity (Est. Lumens)	Power Consumption (Watts)	Luminous Intensity (Est. Lumens)	Power Consumption (Watts)	Luminous Intensity (Est. Lumens)	Power Consumption (Watts)	Luminous Intensity (Est. Lumens)	Power Consumption (Watts)
			TYP	TYP	MAX	TYP	MAX	TYP	MAX	TYP	MAX
T8	12	Clear Lens	24	N/A	N/A	204	3	405	5	N/A	N/A
	24			N/A	N/A	408	6	810	10	N/A	N/A
	36			N/A	N/A	680	10	1296	16	N/A	N/A
	48			N/A	N/A	885	13	1620	20	N/A	N/A
	60			N/A	N/A	1089	16	2025	25	N/A	N/A
T10	12			405	5	340	5	648	8	N/A	N/A
	24			810	10	680	10	1215	15	N/A	N/A
	36			1296	16	1089	16	1944	24	N/A	N/A
	48			1620	20	1361	20	2592	32	N/A	N/A
	60			2187	27	1837	27	3321	41	N/A	N/A
	72			N/A	N/A	2177	32	4050	50	3266	48
	96	N/A	N/A	2858	42	4860	60	3946	58		

All lumens stated using Cool White with clear lens. For Single Frosted lens reduce all lumens by 5%, for double frosted lens reduce all lumens by 10%, for milk white lens reduce all lumens by 30%, from stated lumens.

PART NUMBER GUIDE

SERIES	SIZE	END CAP	LENGTH	VOLT	COLOR	LENS	
Alx	Txx	xxx	xx	24	xx	x	
ALA	T8 ¹	G13	T8 { 12" 18" ² 24" 36" 48" 60" 72" ² 96" ² }	24	S - Super White (6000K)	S - Single Frosted	
ALB	T10	FA8 ²			C - Cool White (5000K)	C - Clear	
ALC		RDCB			D = Mid-White (4100K)	M - Milk White	Reserved for future use
ALD					N - Neutral White (3500K)		
					W - Warm White (2800K)		

NOTES:
 1. Not available in all series types.
 2. Special order, may not be available in all sizes.

Example: ALA-T8-G13-48-24-C-C-S - AL Series, Energy Saving Economy, T8 Size, G13 Base, 20W, 48" 24V- Cool White, Clear Lens

WARNINGS & SAFETY

High power LEDs have a high intensity of light in a single point. Avoid looking directly at the source of light for any prolonged time as it could cause retinal damage. This light source should be shielded with the lens as provided by LED Smart Inc. The removal of the lens would void all warranties and liability from the manufacturer and distributor of this product.

LED Smart Inc. works continually to improve our products, we reserve the right to change or modify the designs or specifications of this product at any time without prior notice. All rights reserved. This product is under a patent and patent pending protection.